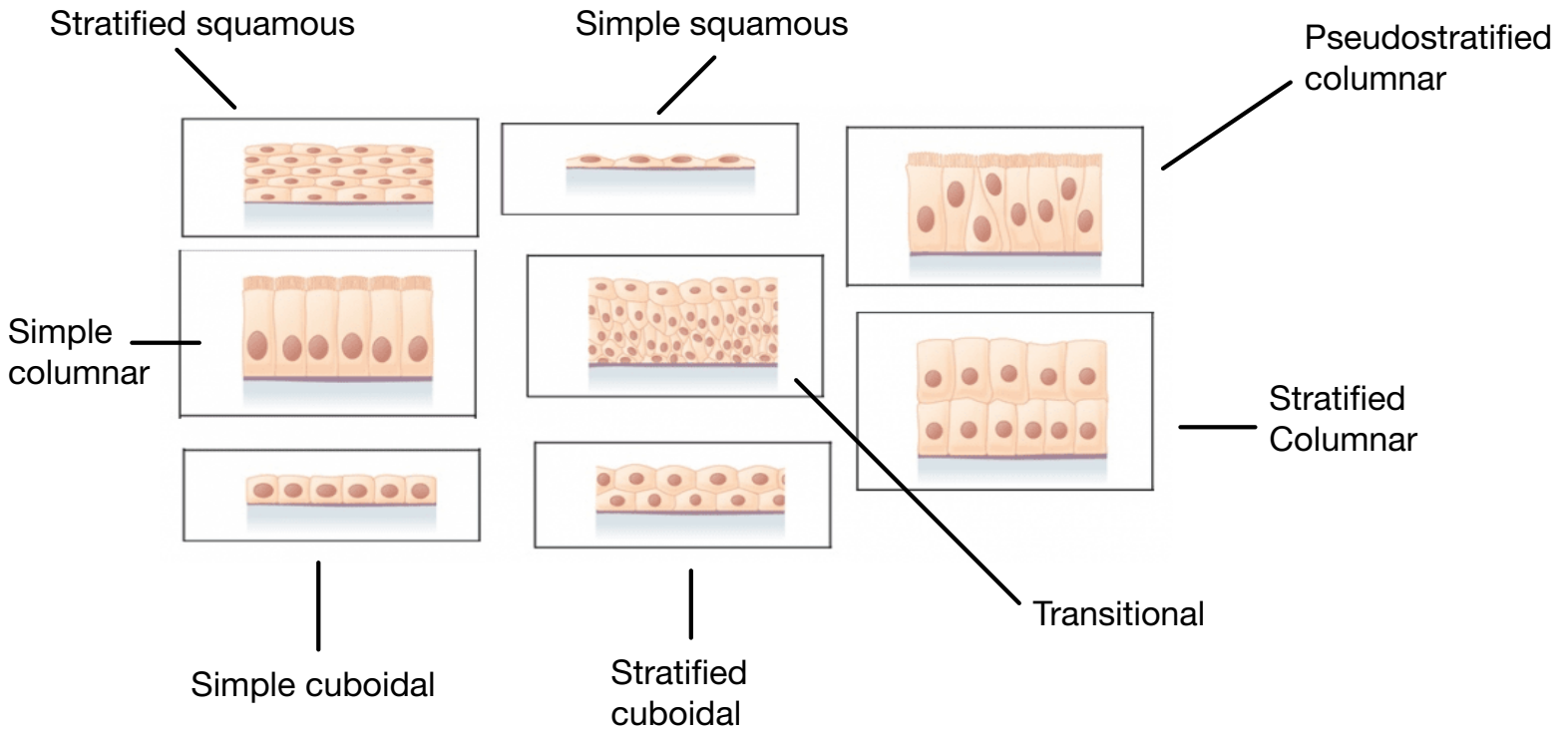
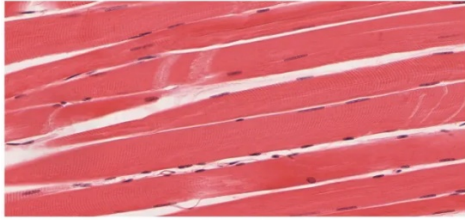


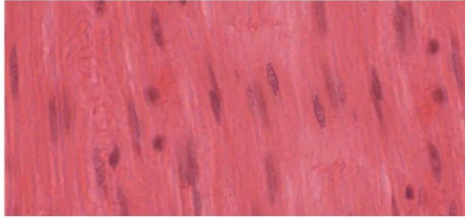
Resource: Chapter 4 of text

Use this word bank to label the diagrams below with the correct type of **epithelial tissue**: simple squamous, stratified squamous, simple cuboidal, stratified cuboidal, simple columnar (ciliated), stratified columnar, pseudostratified columnar, transitional

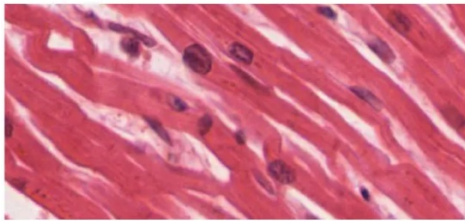




(a)



(b)



(c)

Skeletal

Label the three diagrams to the left with the correct type of **muscle tissue**: cardiac muscle, smooth muscle and skeletal muscle

Smooth

Cardiac